

The Arc of IL:

815-464-1832

20901 LaGrange Road Suite #209

Frankfort, IL 60423

Hours: M-Th 9am-5pm, F 9am-4pm

<https://www.thearcofil.org/>

Illinois Life Span Program:

1-800-588-7002

Family to Family Health Information:

Phone: 815-464-8247

Toll free: 866-931-1110

familytofamily@thearcofil.org

<https://www.familyvoicesillinois.org/>

Illinois Parent Training and Information Center (PTI):

1. Family Resource Center on Disabilities

20 E. Jackson Boulevard, Room 300

Chicago, IL 60604

(800) 952-4199 (in IL), (312) 939-3513

info@frcd.org, www.frcd.org

2. Family Matters

(Serving 94 counties in IL, except the counties of Cook, DuPage, Grundy, Kane, Kendall, Lake, McHenry, and Will)

1901 S. 4th Street, Suite 209

Effingham, IL 62401

(866) 436-7842, (217) 717-8016

info@fmptic.org, www.fmptic.org

Illinois Early Intervention Program:

(800) 323-4769

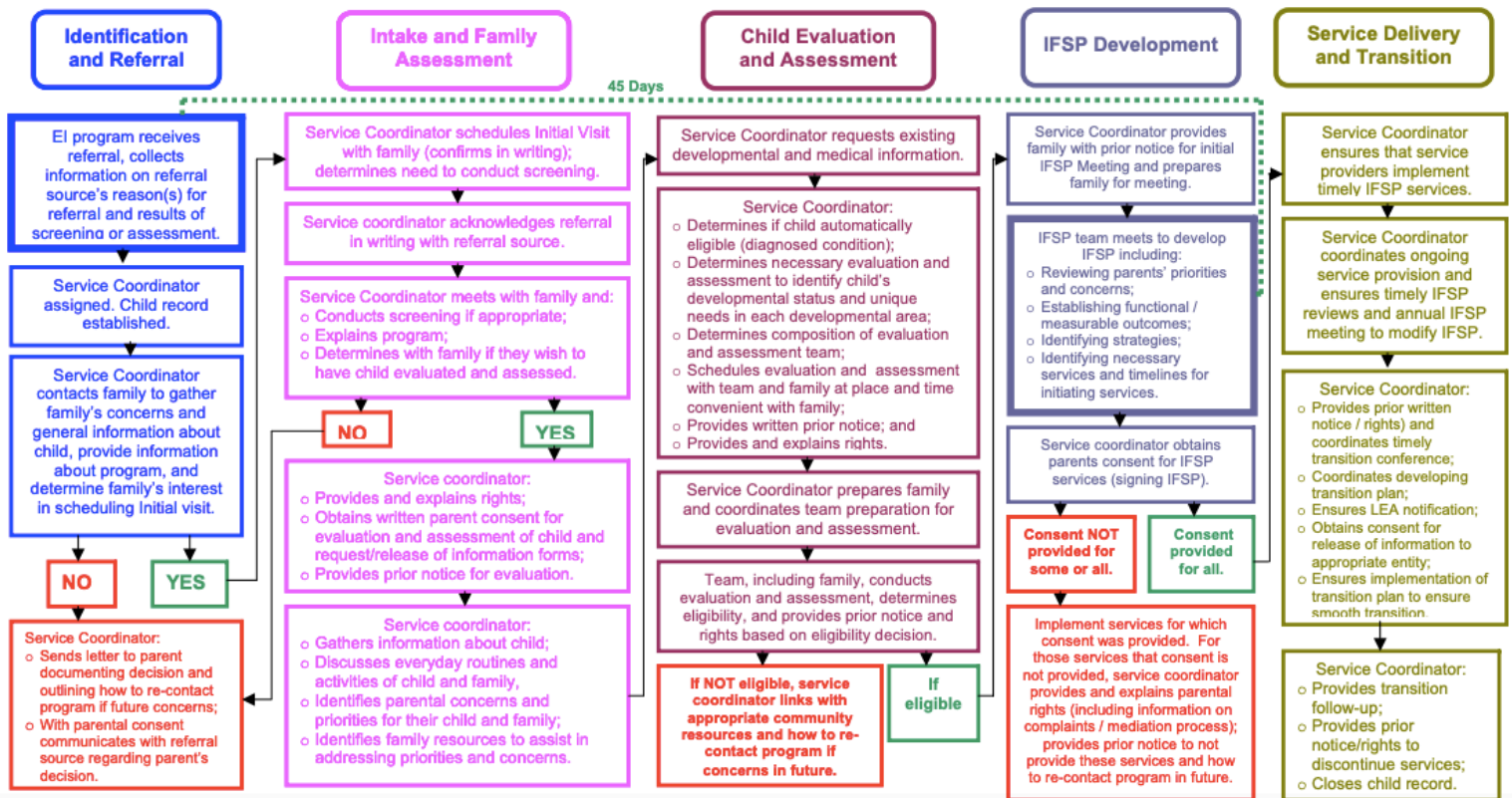
"Zero to Three":

1255 23rd Street, NW, Suite 350

Washington, D.C. 20037

202-638-1144

The Early Intervention / IFSP Process



What is SPEECH LANGUAGE PATHOLOGY?

