

Going to College and the Challenges Faced

Ashley DeGroot

Americans with Disabilities Act of 1990 (ADA)

- The Americans with Disabilities Act (ADA) became law in 1990
- The ADA is a civil rights law that prohibits discrimination against individuals with disabilities in all areas of public life, including jobs, schools, transportation, and all public and private places that are open to the general public.
- The purpose of the law is to make sure that people with disabilities have the same rights and opportunities as everyone else.

Reasonable Accommodation

- Reasonable Accommodation- adjustments made to aspects of academic participation to bring equal access to programs and activities to students with disabilities.
- Ex: special seating, note taking assistance, extended time on test, lecture recordings, pre-recorded text/ text readers, and special housing arrangements

Campus Accommodation

- Transportation
 - Public transit
 - Ride sharing
- Housing
 - Dorm accessibility
- Structural Accommodation
 - Ramps
 - Elevators

Transportation

- Public transit
 - PACE
 - Rides from friends
 - Accessible vehicles
 - Wheelchair vans
 - Adapted cars



Housing

- Wheel chair accessibility
- Adaptive equipment
- Personal Assistant
- Meal prep. Accommodation
- Bathroom availability
- Smart home tech.

Structural Accommodation

- Ramps
- Elevators
- Water fountain
- Workspace accessibility
- Prioritize Seating



Class Accommodation

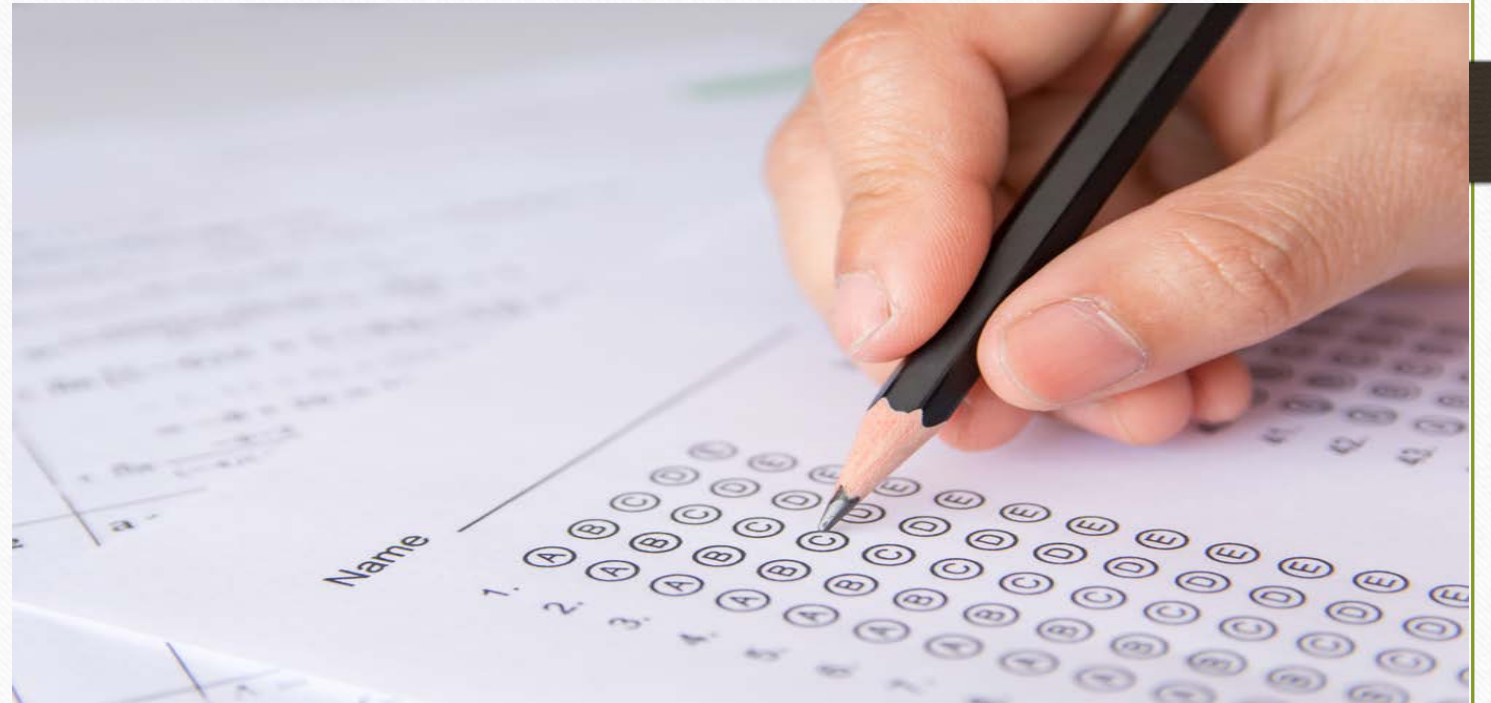
- Note taking
- Testing
- Homework
- Class Participation

Note Taking

- Guided notes
 - Teacher- prepared handouts that outline lectures, audiovisual presentations, or readings, but leave blank space for students to fill in key concepts, facts, definitions, etc.
- Instructor lecture notes
- Copies of notes by a designated note taker
- Audio recordings

Testing

- Test format
- Testing scribe
- Reader



Homework

- Technology
 - Smart tech.
 - Siri, Alexa, Google assistance, virtual assistance



Class Participation

- Screen readers
- ASL
- Hearing aids
- Braille
- Walkers/ wheel chairs
- Service animals

Disability Discrimination

Collegiate and pre-collegiate students are still protected by the ADA and section of the rehabilitation act of 1973 in the pursuit of post secondary education. This includes:

- Public Universities
- Private Universities (schools run by a religious entity are not subject to the ADA)
- Vocational
- Community colleges

Disability Discrimination cont...

- Any school that receives federal financial aid and allows its students to receive federal financial aid, even a religious institution, must accommodate students with disabilities in accordance with section 504.

May/ May not deny admission

May	May not
<ul style="list-style-type: none">• Exclude on lack of qualifications• Exclude based on failure to meet required test scores• Failure to submit a complete application• Exclude for not having the appropriate prerequisite	<ul style="list-style-type: none">• Force you to disclose your disability• Deny admission based on a disability• Exclude from classes, programs, and activities based only on a disability

Eastern Illinois University (EIU)

- FOCUS Program- The FOCUS program is a free, one-to-one mentoring program in which students with disabilities meet individually with a student mentor from Student Disability Services. The purpose of this program is to provide the participants with the skills and supports they need to achieve academic success at the college level.

EIU

FOCUS Program

- The FOCUS Program provides help with learning skills which improve studying tactics through understanding of learning styles.
- The FOCUS helps develop a comfortable mode of communication with professors on campus when there is a need to talk to them about accommodations and extra assistance.
- The FOCUS Program helps to improve time management and organization skills.

EIU

Note Taker Accommodation

- In each class, the instructor should ask for a volunteer note taker. A backup note taker should be available in the event that the note taker is absent.
- The note taker gives the notes to the instructor who then gives the copy to the student with this accommodation
- Students are not entitled (with very few exceptions) to notes when they are absent.

EIU

Priority Registration Procedures

- Current students who are permanently registered with OSDS (office of student disability services) receive priority registration.
- Priority registration is the same week seniors register, so only freshman, sophomores, and juniors need to use priority registration.
- The student is responsible for registering themselves.

EIU

Testing Accommodation Procedures

- Students who have testing accommodations stated on their current letter of accommodations will need to make arrangements with their instructors during the first week of class as to how their testing accommodations will be met.
- Testing accommodations stated on the student's accommodation letter apply to all tests and quizzes.

Prairie State College (PSC)

- Prairie State College (PSC) is committed to providing reasonable accommodations for enrolled or admitted students with documented disabilities. The Office of Disability Services seeks to maintain academic standards while providing equal access and support services to students who are able to benefit from courses offered by the college, have the commitment to succeed, and have a documented disability.

PSC

Grievance Procedure for Students with Disabilities

- Prairie State College does not discriminate on the basis of race, religion, color, age, gender, disability, ancestry, marital status, military discharge status, national origin, veteran status, sexual orientation or other non-merit factors in educational programs, activities, or employment practices. The College is prohibited by law from discriminating in such a manner.

Grievance Procedure for Students with Disabilities cont.

Informal Student Complaint Process

The student should meet with the Disability Coordinator to express his/her concerns via the Informal Complaint Process. If a resolution is not reached with the Disability Coordinator, the student has the option to submit a Formal Complaint via the Student Complaint Form, which is available to all Prairie State College students.

Formal Student Complaint Process

The Formal Student Complaint Process, is available to all Prairie State College students including students with disabilities. A complaint is not considered formal until a student has completed the Student Complaint Form. Formal student complaints are triaged and investigated by the Dean of Equity & Inclusion.

PSC

- Notify the Office of Disability Services for accommodation needs and services

Disability Type	Documentation Guidelines
Specific Learning Disabilities Autism Spectrum Disorders	High School IEP or 504 Plan (Final IEP not accepted) AND Psychological Evaluation with Diagnostic Results
Visual Impairments (Blind/Low Vision)	Documentation from a Qualified Ophthalmologist
Hearing Impairments (Deaf/Hard-of-Hearing)	Auditory Test results from a qualified Audiologist OR Qualified Medical Professional
Attention Deficit Disorder (ADD) Attention Deficit Hyperactivity Disorder (ADHD) Psychological Disorders	Documentation from a qualified Psychiatrist or Psychologist (Mental Health Professional) AND Psychological Evaluation with Diagnostic Results
Mobility Systemic/Chronic Health Other Functional Impairments	Medical Disability Form completed by a Licensed Medical Professional