



THE ARC OF ILLINOIS  
FAMILY TO FAMILY MONTHLY WEBINAR  
WEDNESDAY, JULY 13, 2022

AMANDA M. WALSH, JD, LLM, MSW  
DIRECTOR

# AGENDA

- I. Welcome
- II. Meet the Partnership
- III. Status of Children's Mental Health
- IV. Plans for the Future
- V. Conclusion

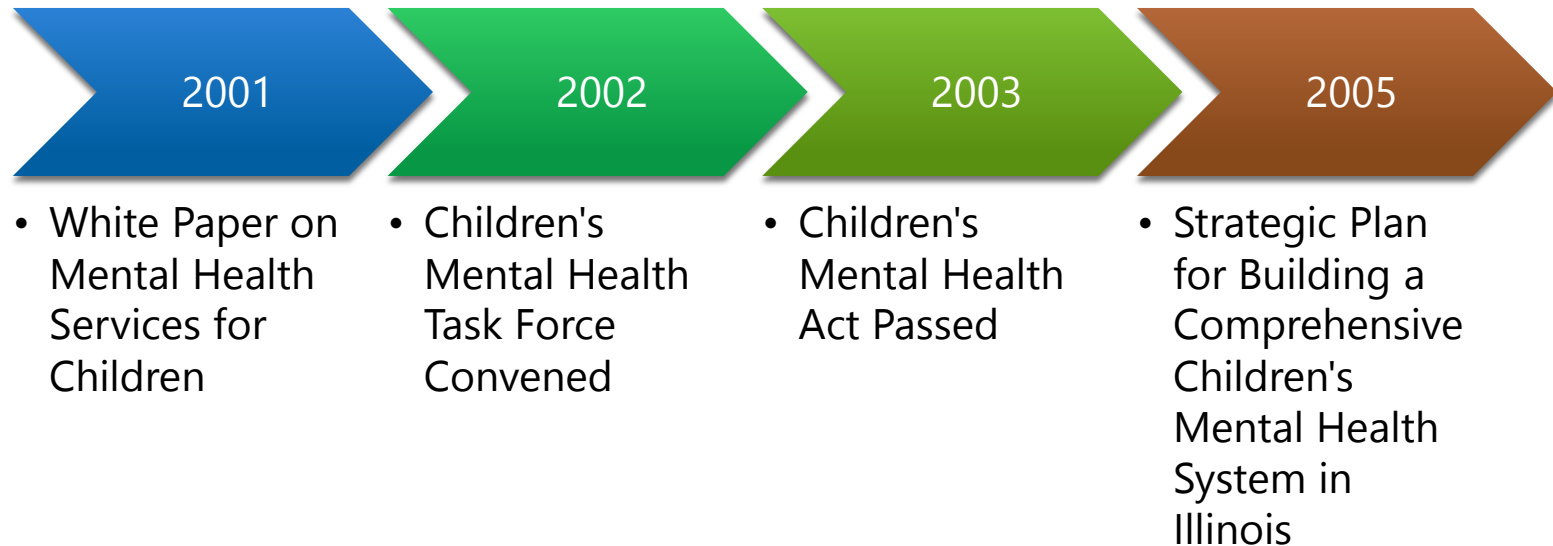




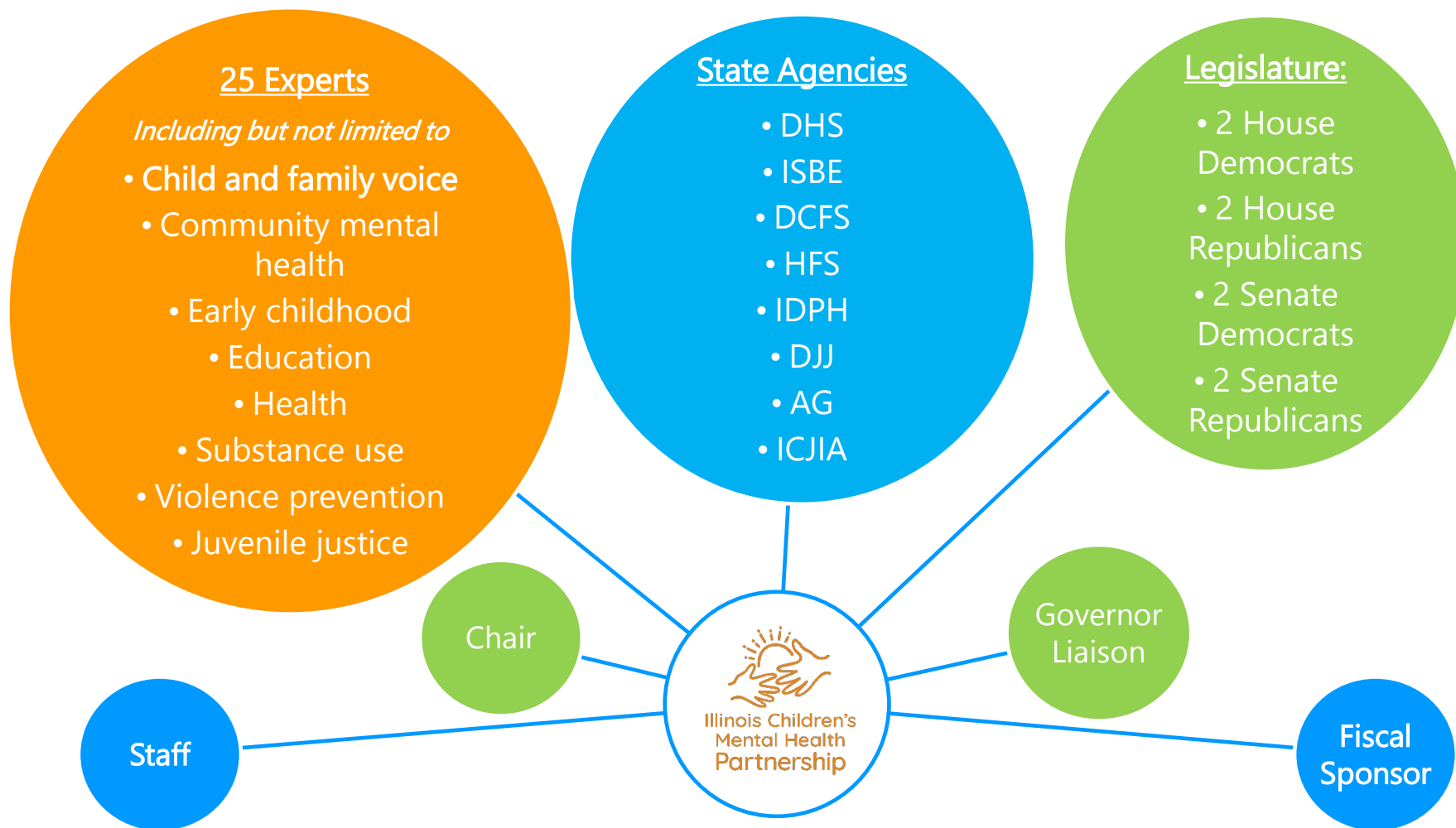
## MEET THE ILLINOIS CHILDREN'S MENTAL HEALTH PARTNERSHIP



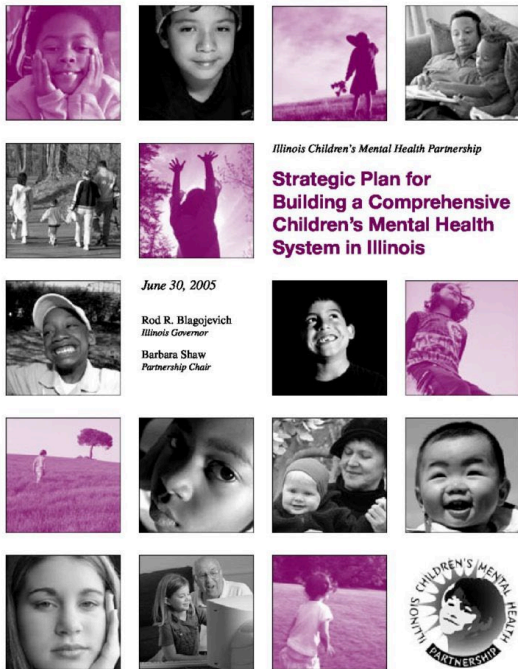
## ICMHP: HOW IT BEGAN



# ICMHP MEMBERSHIP & OPERATIONS (THROUGH DEC 2022)



# 2005 CHILDREN'S MENTAL HEALTH PLAN & ICMHP STRATEGIC PRIORITIES



- ☐ Family & youth involvement
- ☐ Increased mental health programs
- ☐ Mental health consultation across all child-serving systems
- ☐ Public awareness campaign
- ☐ Maternal depression
- ☐ Social & emotional education
- ☐ Screening & assessment for child welfare and juvenile justice
- ☐ Increased early intervention and treatment for:
  - 0-5 y/o
  - Transitioning out of public systems
  - Exposed to trauma
  - SASS follow-up
  - Mental health not severe enough for public assistance
- ☐ Residential treatment service review
- ☐ Policy & research center

# SOCIAL EMOTIONAL LEARNING STANDARDS



# ILLINOIS DOCASSIST

**IllinoisDocAssist**

Answering primary care behavioral health questions about children, adolescents, and perinatal patients



Phone  
Consultation

**CALL NOW!**

**1-866-986-ASST  
(2778)**

There is no charge for  
phone consultations



# MENTAL HEALTH CONSULTATION INITIATIVE – UNIVERSAL MODEL DEVELOPMENT

- **Model serves to:**
  - Identify best practices
  - Define the specific nature of infant/early childhood mental health consultation
  - Help coordinate consultation practices across the state
  - Describes the necessary structures and supports that need to be in place to support I/ECMH consultants and ensure the development of an adequate workforce to provide these services



# SAY IT OUT LOUD CAMPAIGN



# STATUS OF CHILDREN'S MENTAL HEALTH



# NATIONAL EMERGENCY

American Academy  
of Pediatrics  
DEDICATED TO THE HEALTH OF ALL CHILDREN™



Search All AAP

Advocacy

[Blueprint for Children](#) [Advocacy Issues](#) [State Advocacy Focus](#) [Advocacy Resources](#)

## AAP-AACAP-CHA Declaration of a National Emergency in Child and Adolescent Mental Health

[Home](#) / [Advocacy](#) / [Child and Adolescent Healthy Mental Development](#) / AAP-AACAP-CHA Declaration of a National Emergency in Child and Adolescent Mental Health

A declaration from the American Academy of Pediatrics, American Academy of Child and Adolescent Psychiatry and Children's Hospital Association:



WBEZ  
CHICAGO

[SIGN IN](#) [NPR SHOP](#)

[DONATE](#)

[NEWS](#) [ARTS & LIFE](#) [MUSIC](#) [PODCASTS & SHOWS](#) [SEARCH](#)



VIDEO

LIVE

SHOWS

CORONAVIRUS



CHILDREN'S HEALTH

Pediatricians say the mental health crisis among kids has become a national emergency

October 20, 2021 · 3:50 PM ET

## Children's mental health crisis a 'national emergency,' pediatric groups declare

*There has been a "shocking" rise in urgent mental health help for kids.*

By [Meredith Deliso](#)

October 19, 2021, 4:47 PM • 5 min read



# NATIONAL EFFORTS

FOR IMMEDIATE RELEASE  
December 7, 2021

Contact: HHS Press Office  
202-690-6343  
[media@hhs.gov](mailto:media@hhs.gov)

U.S. Surgeon General Issues Advisory on Youth  
Mental Health Crisis Further Exposed by COVID-19  
Pandemic



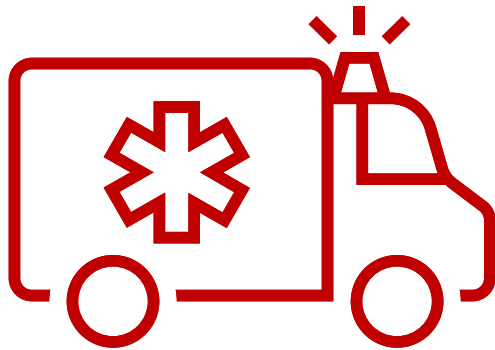
[Administration](#) [Priorities](#) [COVID Plan](#) [Brie](#)

BRIEFING ROOM

## FACT SHEET: President Biden to Announce Strategy to Address Our National Mental Health Crisis, As Part of Unity Agenda in his First State of the Union

MARCH 01, 2022 • STATEMENTS AND RELEASES

## COVID-19 AND CHILDREN'S MENTAL HEALTH: NATIONAL



24% for children aged 5-11



31% for children aged 12-17

# COVID-19 AND CHILDREN'S MENTAL HEALTH: ILLINOIS



**48%**

of parents had talked with their child's primary care provider about mental health concerns for their child in the last 6–12 months



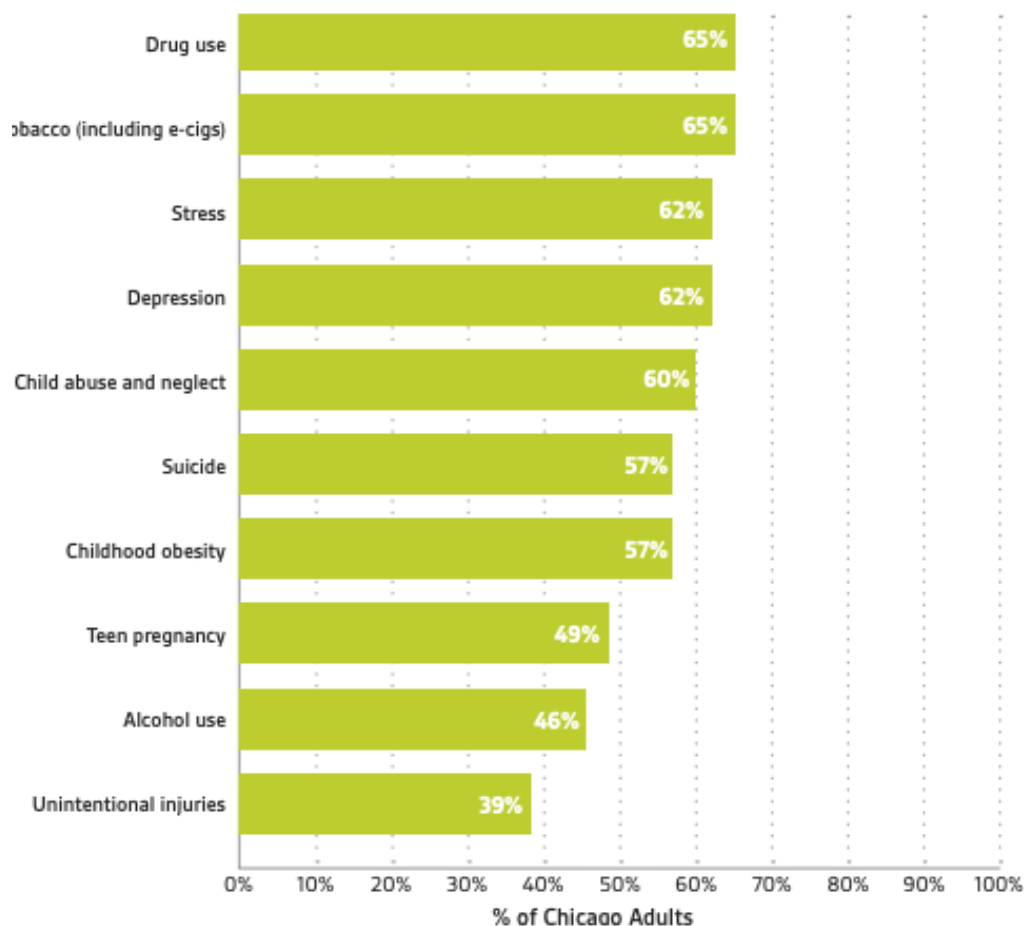
**24%**

of parents said their child had used mental or behavioral health services in the last 6–12 months

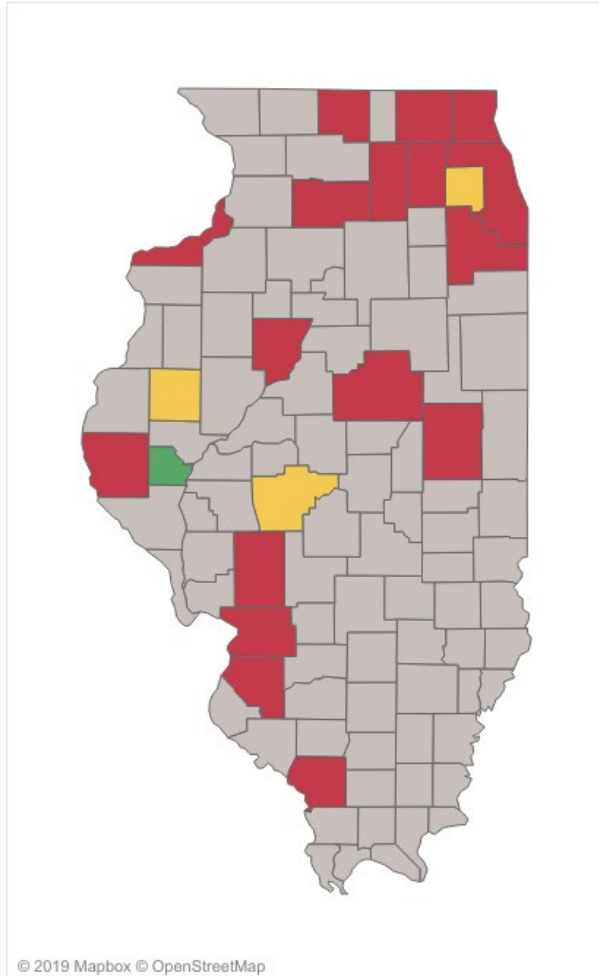


**18%**

of parents said they could not get the mental or behavioral health services they wanted for their child



Map 2 - CAPs per 100K COUNTY



**CAPs Per 100K**  
 Mostly Sufficient Supply ( $\geq 47$ )  
 High Shortage (18-46)\*  
 Severe Shortage (1-17)\*  
 No CAPs

County	Pop. < 18	Number of CAPs
Cook County	1,186,398	181
DuPage County	218,771	41
Lake County	179,177	27
Sangamon County	45,563	14
Will County	182,916	7
Champaign County	39,273	6
Winnebago County	69,159	6
Kane County	142,953	4
McHenry County	76,907	4
Peoria County	44,665	4
McLean County	38,166	3
St. Clair County	64,054	3
Rock Island County	32,821	2
Adams County	15,184	1
Brown County	1,045	1
DeKalb County	22,872	1
Jackson County	10,703	1
Lee County	7,006	1
Macoupin County	10,072	1
Madison County	59,303	1
McDonough County	5,274	1

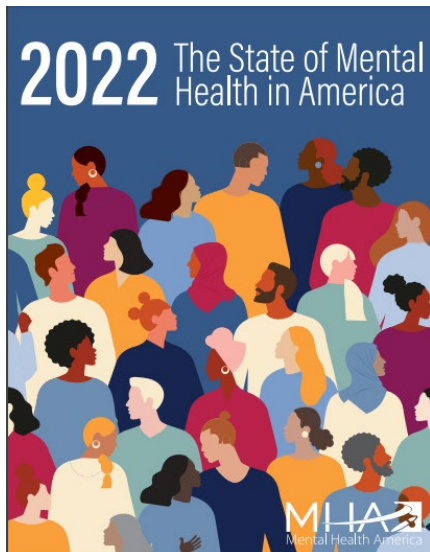
In Illinois, **81** of the 102 counties, representing nearly 540,000 children, **do not** have a CAP.

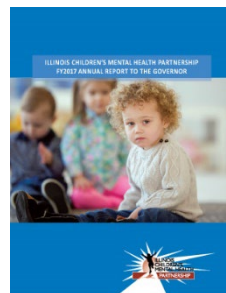
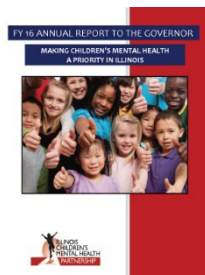
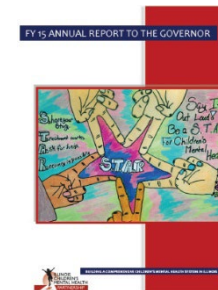
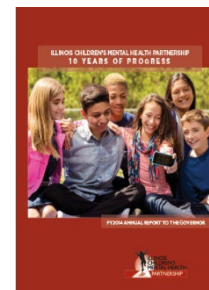
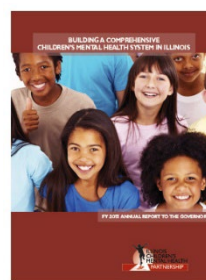
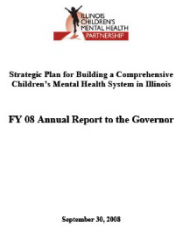
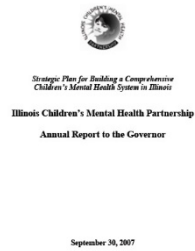
In the 21 counties that do have a CAP, there are only **310** for 2.45 million children.



## NATIONAL RANKINGS: MENTAL HEALTH AMERICA

MHA- IL	2015	2020	2021	2022	2022
<b>Overall State Rank For Youth Mental Health</b>	19	27	36	12	NATIONAL
<b>Youth With At Least One Major Depressive Episode In The Past Year</b>	8.86% 94,000	14.00% 141,000	14.86% 148,000	15.15% 149,000	15.08%
<b>Youth With MDE In The Past Year Who Did Not Receive Treatment</b>	(Not Asked)	56.1% 80,000	62.1% 90,000	55.25% 77,000	60.3%
<b>Youth With Severe MDE In The Past Year</b>	(Not Asked)	10.1% 98,000	11.0% 104,000	11.0% 104,000	10.6%
<b>Youth With Severe MDE Who Received Some Consistent Treatment</b>	(Not Asked)	27.40% 26,000	25% 26,000	38.3% 38,000	27.2%
<b>Students Identified With Emotional Disturbance for an IEP</b>	10.87% 20,192	10.17% 18,373	10.19% 18,237	10.59% 18,381	7.59%
<b>Youth With Private Insurance That Did Not Cover Mental Or Emotional Problems</b>	36.4% 82,513	5.8% 28,000	7.2% 34,000	6.6% 33,000	8.1%
<b>Youth With Substance Use Disorder In The Past Year</b>	5.83% 62,000	4.67% 47,000	4.04% 40,000	4.25% 42,000	4.08%







## PLANS FOR THE FUTURE



# CHILDREN'S BEHAVIORAL HEALTH TRANSFORMATION INITIATIVE

## - DR. DANA WEINER & CHAPIN HALL

Children's Behavioral Health Transformation Initiative

# MONTHLY PROGRESS

July 2022



### COORDINATION

- Interagency Crisis Staffing Workgroup
- Data-Sharing Agreements

### ANALYSIS

- Needs and Gaps Analysis
- Business Process Review
- Policy Review

### TRANSFORMATION

- Online Portal Prototype
- Best Practices
- Blueprint Due December 2022

## N.B. V. NORWOOD CONSENT DECREE UPDATES

### CMS Approved 1915(i) Waiver!

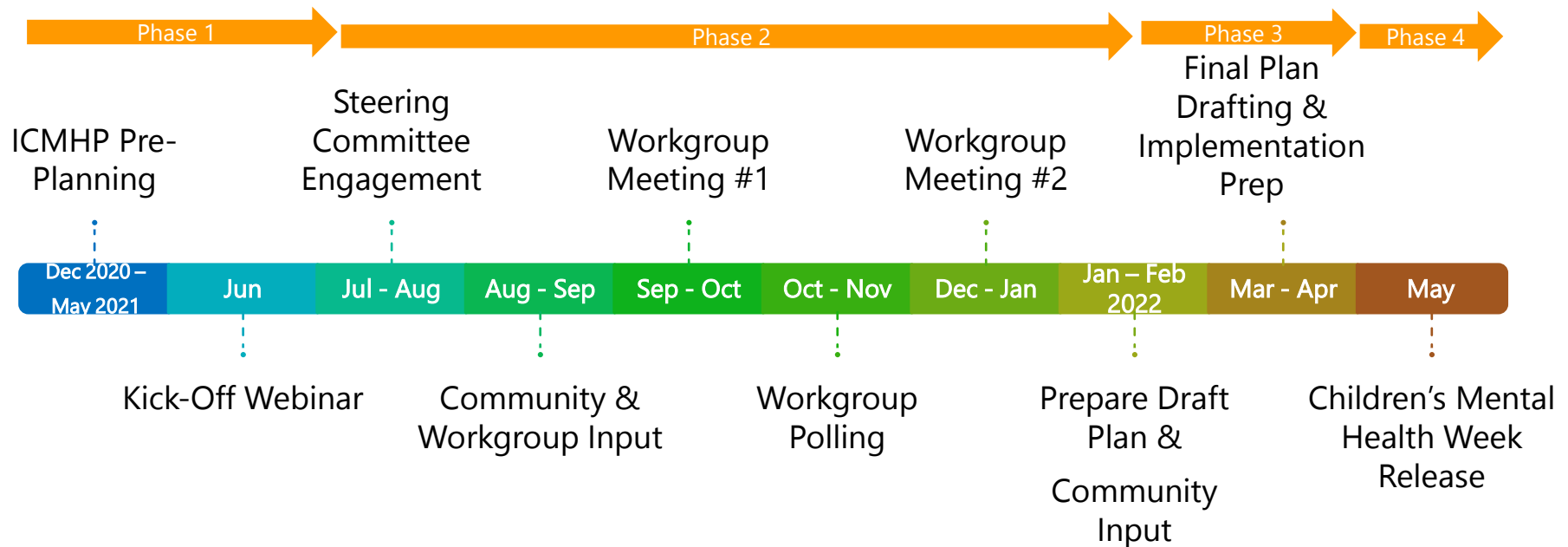


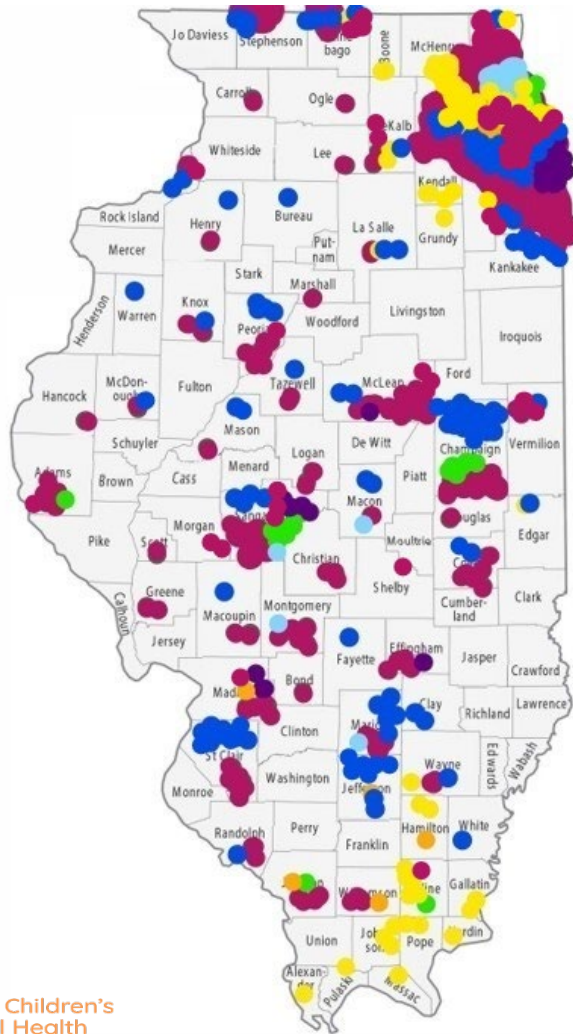
- ❖ August 2022: Care Coordination & Support Orgs (CCSO) Announced & Prep Begins
- ❖ Aug – Oct 2022: Hiring Completed
- ❖ Nov 2022: Readiness Review & Trainings Begin
- ❖ Dec 2022: Readiness Review Complete
- ❖ Jan 2023: Pathways to Success Services Begin!



## 2022 CHILDREN'S MENTAL HEALTH PLAN

# CHILDREN'S MENTAL HEALTH PLAN –





- Youth (142)
- Community (529)
- Legislative Districts (13)
- Social Determinants of Health
- Prevention
- Early Intervention
- Treatment

Workgroups  
Across Full  
Continuum  
(124)

**TOTAL UNIQUE INDIVIDUALS PROVIDING INPUT: 808**  
(68 / 102 counties represented)



## OUR VALUES

In order to improve the mental health of the citizens of our State, it was important for the Plan to start with a set of values for every overarching goal and recommendation of the Plan. These values must be at the center of every decision, program, and policy meant to improve child and family mental health:



### **Equity**

the fair treatment, access, opportunity, and advancement of all people, while also striving to identify and eliminate barriers that have excluded individuals;



### **Diversity**

diverse representation across race, ethnicity, gender, ability, sexual orientation, gender identity, and socio-economic status;



### **Inclusion**

all voices must not only be represented, but actively included in the process. In particular, the youth, families, and communities with lived experience;



### **Wellness**

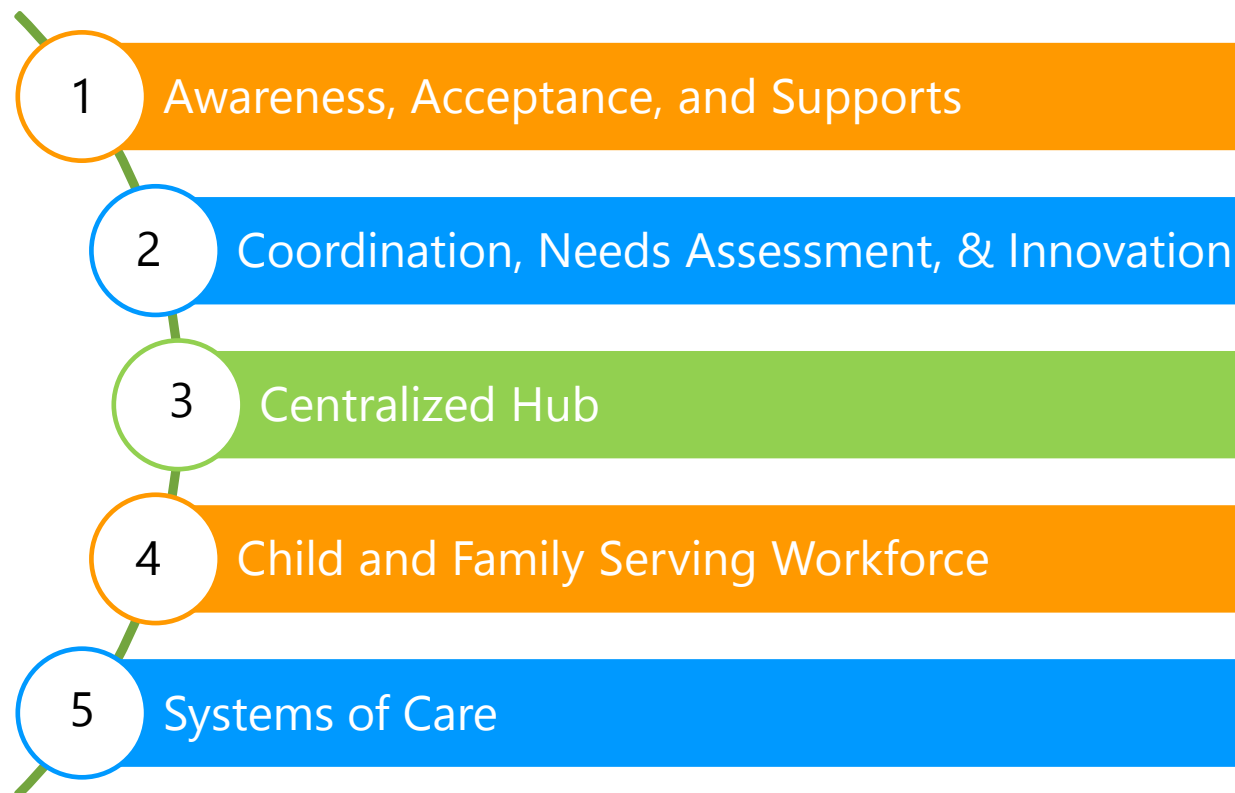
mental health for all, including children and families, should not be viewed as separate from our overall health and well-being. We must all recognize it is part of our everyday actions and lives; and



### **Health in All Policies**

an acknowledgement needs to be made about the role of mental health being a relevant portion of all statewide policies, including economic development, housing, food insecurity, transportation, and more.

# CHILDREN'S MENTAL HEALTH PLAN GOALS





## *Children's Mental Health Plan*



## ANNOUNCING THE ILLINOIS CHILDREN'S MENTAL HEALTH PLAN!

ICMHP was charged with developing and monitoring a plan to build comprehensive and coordinated mental health services, programs, and supports for Illinois children and their families. The Partnership created its [initial plan in 2005](#), with a brief update to the [strategic priorities in 2012](#). We are excited to announce that for the first time in 17 years, ICMHP and the State of Illinois have developed a new Children's Mental Health Plan to improve the overall wellbeing of all Illinois youth and families.

[ICMHP 2022 CHILDREN'S MENTAL HEALTH PLAN](#)[ICMHP 2022 CHILDREN'S MENTAL HEALTH PLAN  
EXECUTIVE SUMMARY](#)

CLOSING

Thank you!  
Please visit us at:  
[www.ICMHP.org](http://www.ICMHP.org)

Amanda M. Walsh, JD, LLM, MSW  
Director, ICMHP  
[AMWalsh@luriechildrens.org](mailto:AMWalsh@luriechildrens.org)

