

A silver key and a green paper cutout of the state of Minnesota are placed on a wooden surface. The key is positioned diagonally, with its head at the top left and its bit at the bottom left. The green paper cutout is positioned diagonally, with its top at the top right and its bottom at the bottom right. The text "Supportive Housing" is overlaid in the center of the image.

# Supportive Housing

2022

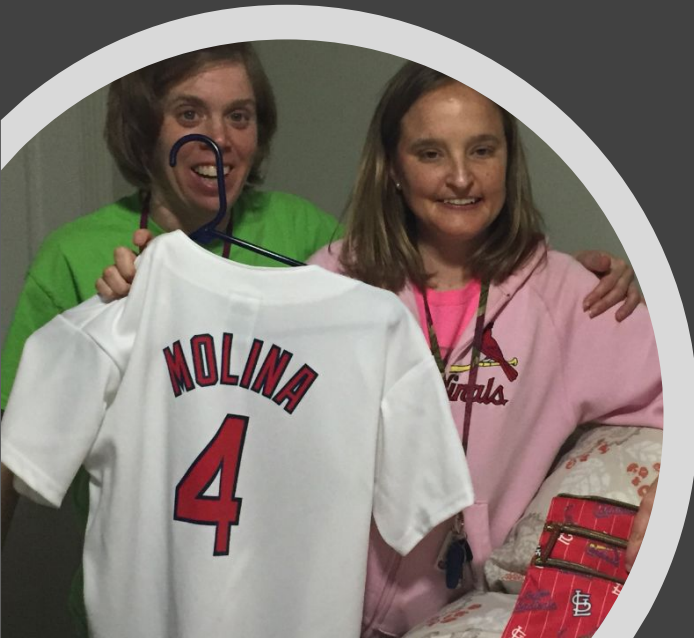




# Curtis

Curtis Harris is an advocate and activist! Curtis is a Chicagoland Autism Connection Board Member and is a Council Member for IL Council on Developmental Disabilities.





## Julie V.

Julie Verdu is an expert in Supportive Housing. She lives in Supportive Housing and completed training to be a Supportive Housing Peer Ambassador!



# Vincent S.

Vincent Smith is an advocate and believes everyone has the right to live in the community! Vincent is a champion for accessible housing. Vincent is on the Pace Para Transit Advisory Committee and the Arc of Illinois Board. He is a former member of the Illinois Council on Developmental Disabilities.





# Nothing About Us Without Us

Julie



This Photo by Unknown author is licensed under CC BY-NC



# Today we will talk about:



Why are we here?



What is Supportive Housing?



Why We Love Our Apartments



How to Get Supportive Housing





# Why are we here?



To SPEAK UP and SPEAK  
OUT!

Vincent



# We Choose How We Live

---



Vincent



A photograph of a modern, well-lit room, likely a hotel or a high-quality apartment. The room features a large window on the left side, offering a view of a street with trees and a building. In the foreground, there is a bed with a patterned blanket. To the right of the bed, there is a black armchair, a dark wooden desk with three drawers, and a black metal chair. A sink is visible in the bottom right corner. The room has a clean, minimalist aesthetic with light-colored walls and a dark floor.

# What is Supportive Housing?

Curtis



# Supportive Housing is Home

---

- Have a lease
- You pay rent
- In a neighborhood like anyone else
- You live alone or with someone you choose

Curtis



This Photo by Unknown author is licensed under CC BY SA

# What is a Lease?

- A lease has the rules of the building
- How much the rent costs
- Who can live there
- It says how long you can live there
  - Leases are usually 1 year, and you can renew
- Some leases allow pets, but not always





# A house can be supportive housing

---





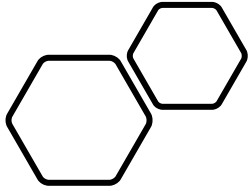
This Photo by Unknown author is licensed under CC BY-SA



**Apartments can  
be supportive housing  
too!**

---





## Supportive Housing is **NOT** a

- Program
- Group Home
- Institution
- Nursing Home

Julie



# Important things to know!

Talk to your family or staff and your landlord about what to do in an emergency!

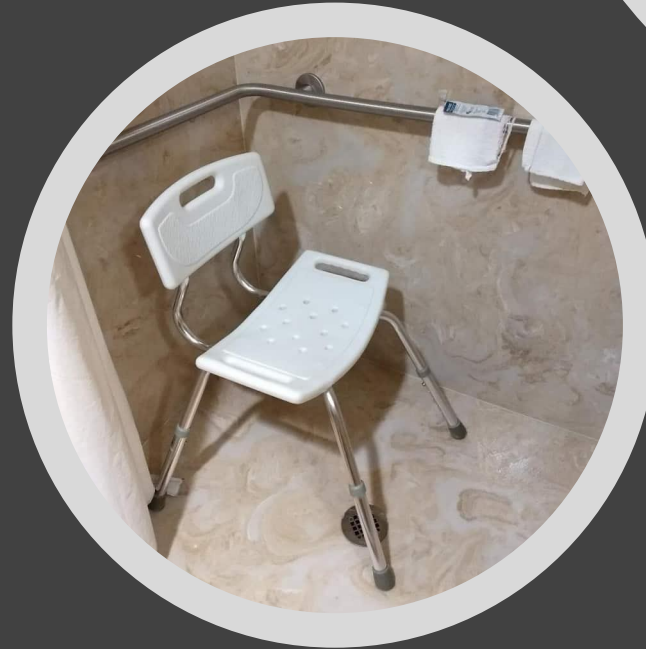
- Fire Alarms
- Weather
- Tornado
- Flooding





# Access for People with Disabilities

Sometimes people with disabilities need something changed in their apartment for accessibility



# Changes that might happen

- Income might change
- Change who you live with
- Getting married
- Having a family, having a baby
- Workers or support staff might change
- Health changes – you might need more or less help, both are ok!



# Housing Wishes and Dreams

Where would you like to live?

What kind of place is it?

Who do you live with?




*My dream is ...*

# Some things that are important about my housing are:

- Close to family and friends
- Easy to get places
- Near a job
- Accessible
- Safe neighborhood
- Private with my own space
- Allows pets





---

IT'S YOUR RIGHT TO  
LIVE WHERE YOU  
WANT

---

I MAKE MY CHOICES!

---

I WANT TO LIVE  
WHERE I WANT, IN THE  
COMMUNITY

# Who do you want to live with?

---



With someone you  
choose



With family/parents



With a group of people



By yourself



# Who do you want to live with? It's your Choice!

---



With someone you choose

Curtis



With family/parents



With a group of people



By yourself



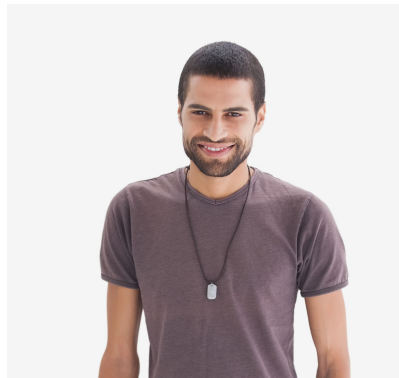
# Who should get to choose where you live?



State Service  
System



Family/Paren  
ts



You!



Staff

Curtis



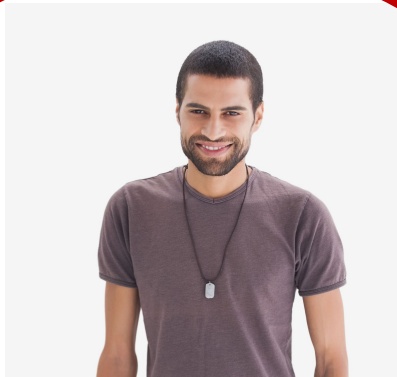
# Who should get to choose where you live?



State Service  
System



Family/Paren  
ts



You!



Staff

Curtis

# IS THIS TRUE or FALSE?

1. Self Advocates must live in supportive housing

(✓ one)

☐

**TRUE**

☐

**FALSE**



# IS THIS TRUE or FALSE?

1. Self Advocates must live in supportive housing

(✓ one)

☐

**TRUE**

☒

**FALSE**



# Getting Help from Family or Staff

Julie N



# How to Get Supportive Housing

**Let people know you want supportive housing!**

Talk about it at all meetings about your goals and ask to have it written into your plan.



**You can live in  
your own  
apartment with the  
right support**

**We do!**





# It's Courtney, Adam, Nicole, Chris and Julie!

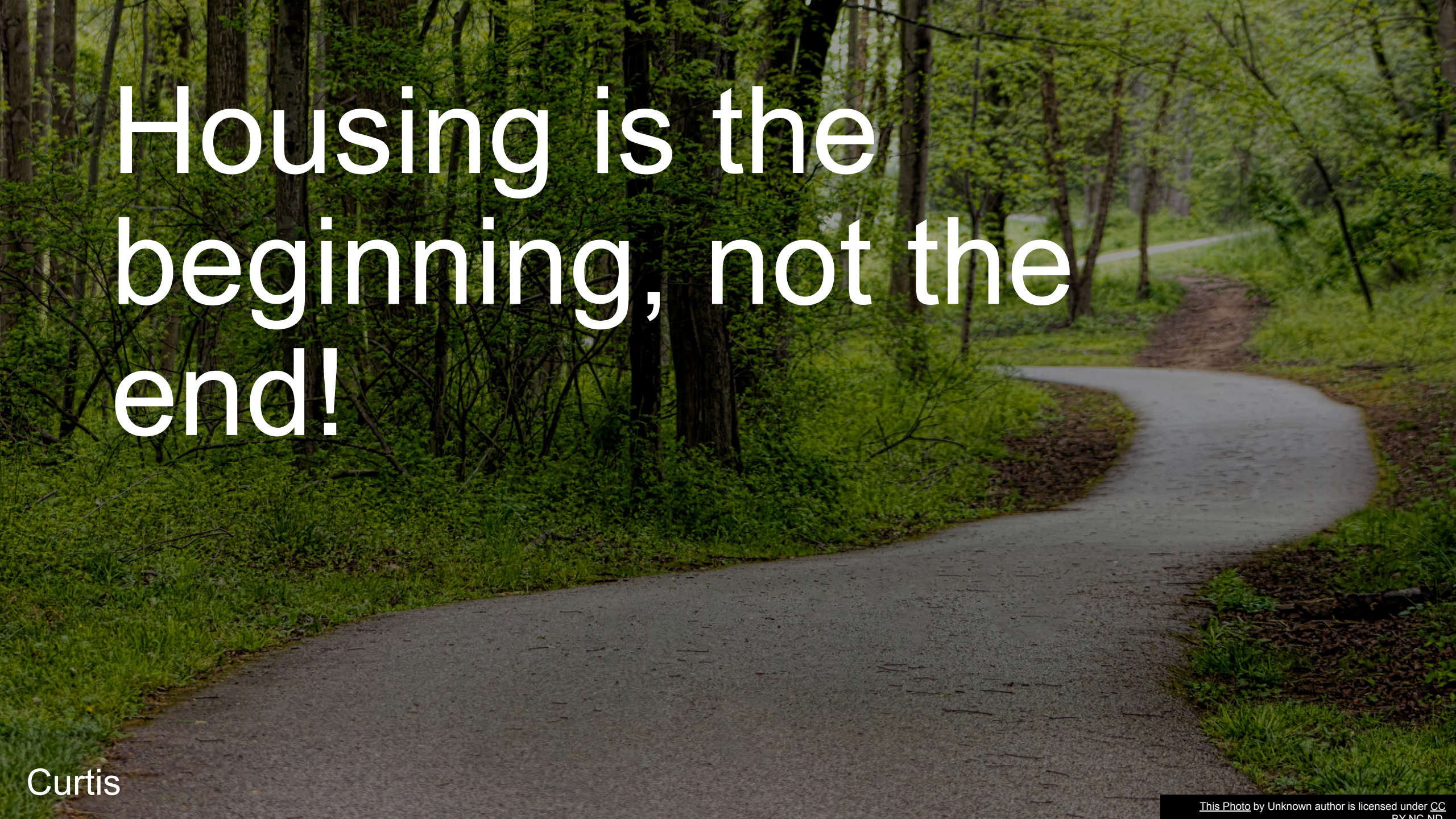


Julie



**What are your questions about  
living in your own place?**



A paved path winds through a lush green forest. The path is made of asphalt and curves to the right. The forest is dense with green trees and undergrowth. The lighting is soft, suggesting a cloudy day or early morning/late afternoon. The overall mood is peaceful and serene.

# Housing is the beginning, not the end!



# Contact Information

If you want to reach Curtis, Julie V. or Vincent, contact Julie Nelson

Julie Nelson, CSH

- Phone: (312) 332-6690 ext. 2828
- Email: [julie.nelson@csh.org](mailto:julie.nelson@csh.org)