

Should the Cabin Lose Pressure

Lessons my daughter has taught me about being a CEO

Kathryn H Lavin, MSW
Executive Director, Gateway to Learning

Presented to The Arc of Illinois Executive Conference

June 9, 2023



OUR MISSION:

Gateway to Learning's mission is to provide lifelong learning for adults with intellectual challenges and developmental disabilities that promotes active inclusion at home, at work, and in the community.

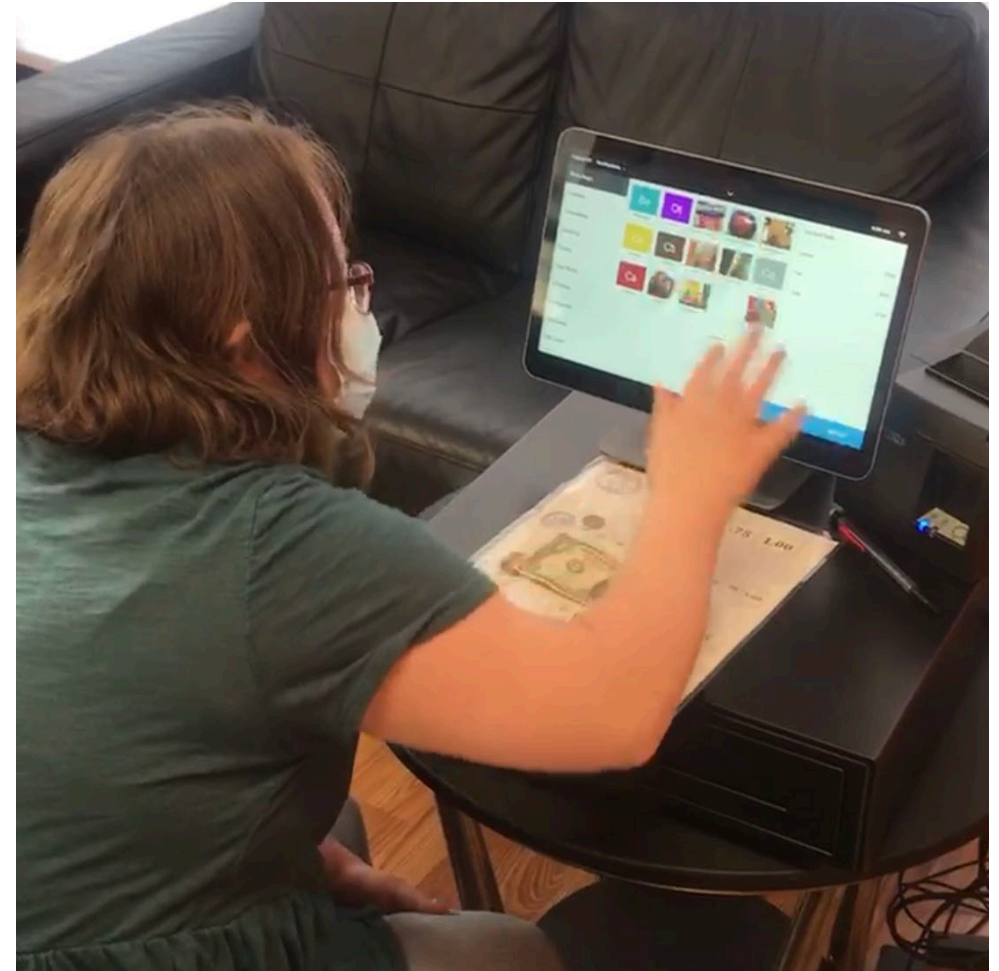


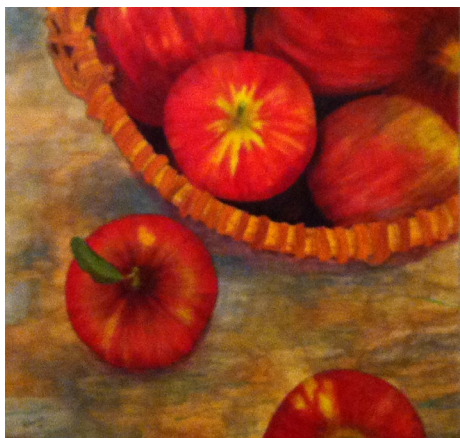
— Dorothy's —
SWEET SHOPPE



Gateway to Learning





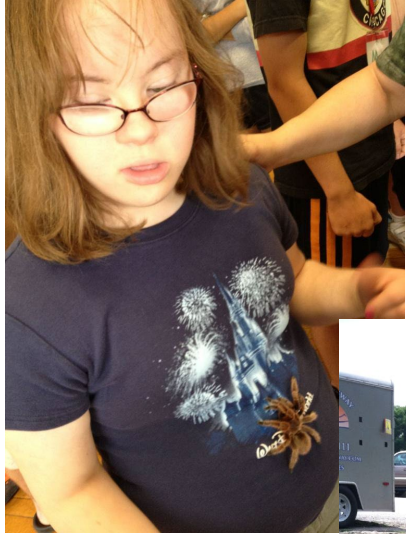




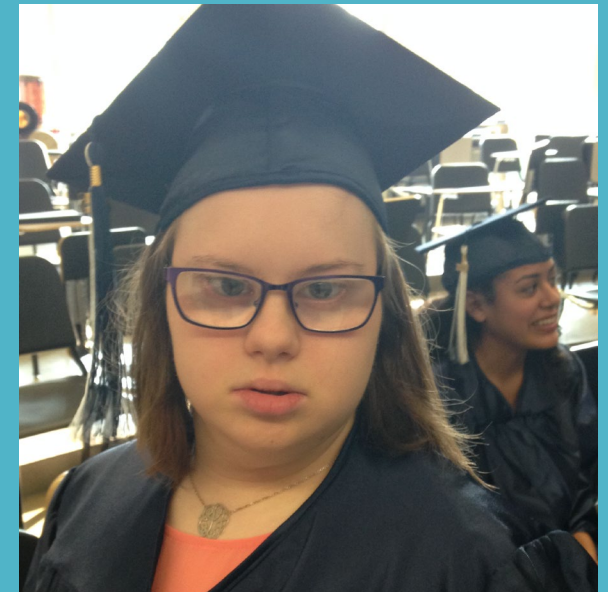
Over the years

#1
Certain
things are
not in my
control.





#2
Abilities
(and challenges)
come in all
different shapes
and sizes.





#3
Therapists
are
needed.

#4 Dating is important



#5
People are
going to
judge you.





#6

Collaboration is best

but if you need to battle, fight hard and persevere



PEOPLE 	QUESTN 	PLACES 	SOCIAL 	TIME 	GROUPS 	DESCRB 
I	me	any- every- but or	that	this	more	ABC 123
my	can	to	the	a-	and	at
it	do	ACTIONS 	come 	go 	for	in

#7

Communication Comes in
all Shapes and Sizes



#8
Can't go in
reverse.
Release and
Move on.



#9
Putting your
oxygen mask
on first is
REQUIRED.

#10
Hugs are
REQUIRED.





#11
Disney is Magic.