



SEE A SEIZURE

Learn. Look. Log.

**This presentation is not intended as a substitute
for professional medical advice, diagnosis, or treatment.**

**Never disregard professional medical advice or delay seeking
it because of something you have read or seen in this presentation.**

**This presentation was developed by Jazz Pharmaceuticals
for promotional use and is not eligible for CME credits.**

MANY SEIZURES ARE HARD TO SPOT IF YOU DON'T KNOW WHAT TO LOOK FOR



Hsibsvi

DfvdQhxurdWfdgg

SEE A SEIZURE

©2025 Jazz Pharmaceuticals plc or its subsidiaries. All rights reserved. US-NEU-2500025

SEIZURE TYPES

ATONIC SEIZURE (DROP SEIZURE)

SLIDE 5 →

ATYPICAL ABSENCE SEIZURE

SLIDE 7 →

FOCAL IMPAIRED AWARENESS SEIZURE

SLIDE 9 →

TONIC SEIZURE

SLIDE 11 →

FOCAL AWARE SEIZURE

SLIDE 13 →

GENERALIZED TONIC-CLONIC SEIZURE

SLIDE 14 →

MYOCLONIC SEIZURE

SLIDE 15 →

ATONIC SEIZURE (DROP SEIZURE)



LENGTH

HEAD DROP

MUSCLE WEAKNESS

AFTER THE SEIZURE (POSTICTAL)

← SEIZURE TYPES NEXT SEIZURE →



Atonic seizures can often be confused with the act of dozing off (ex. an individual nodding off to rest while sitting upright, then abruptly waking up), or a behavioral tic.¹⁻³

Guxjv#Prqwh{vl

Xowhu# hg#0#

SEE A SEIZURE

©2025 Jazz Pharmaceuticals plc or its subsidiaries. All rights reserved. US-NEU-2500025



ATYPICAL ABSENCE SEIZURE



← SEIZURE TYPES NEXT SEIZURE →

LENGTH

BLANK STARE

EYE MOVEMENT

OTHER MOVEMENTS

AFTER THE SEIZURE (POSTICTAL)



Atypical absence seizures can often be confused with daydreaming, staring into space, or behavioral issues.²



FOCAL IMPAIRED AWARENESS SEIZURE



LENGTH

EYE MOVEMENT

UNCONTROLLABLE, REPETITIVE MOVEMENTS

AFTER THE SEIZURE (POSTICTAL)

[← SEIZURE TYPES](#) [NEXT SEIZURE →](#)

ⓘ Focal impaired awareness seizures can often be confused with repetitive behavioral tics, daydreaming, or altered awareness as a side effect of medication.^{1,4}

G11arjxhiv#Fdg#Qhxurvf1

SEE A SEIZURE

©2025 Jazz Pharmaceuticals plc or its subsidiaries. All rights reserved. US-NEU-2500025



TONIC SEIZURE



← SEIZURE TYPES NEXT SEIZURE →

LENGTH

MUSCLE STIFFNESS

BACK ARCHING

DURING SLEEP

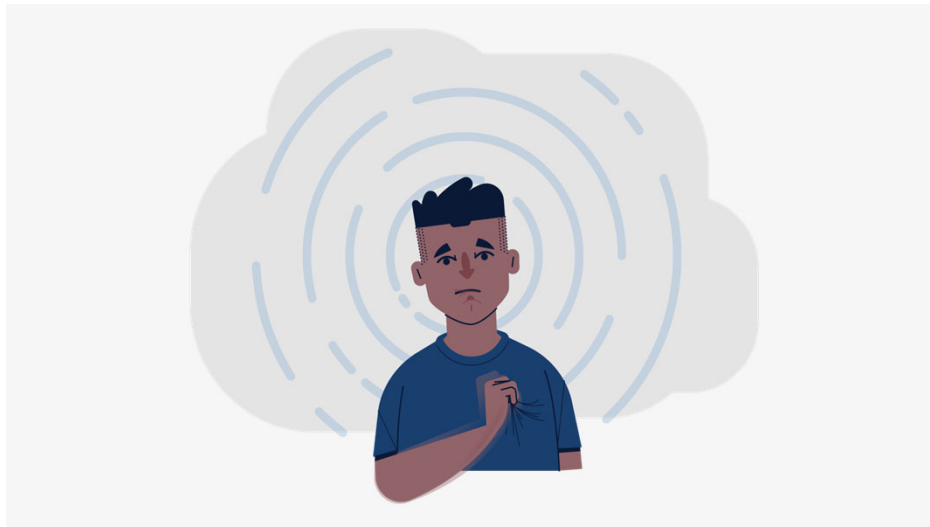
AFTER THE SEIZURE (POSTICTAL)



Tonic seizures can often be confused with nightmares or bad dreams.^{1,2}



FOCAL AWARE SEIZURE



← SEIZURE TYPES NEXT SEIZURE →

LENGTH

AWARENESS

BODY SHAKING

CHANGING SENSES

AFTER THE SEIZURE (POSTICTAL)

⚠ Focal aware seizures can often be confused with migraines or the side effects of some medications (ex. changes in taste, smell, vision, or hearing).¹

GENERALIZED TONIC-CLONIC SEIZURE



← SEIZURE TYPES NEXT SEIZURE →

LENGTH

MUSCLE STIFFNESS

UNCONTROLLABLE JERKING

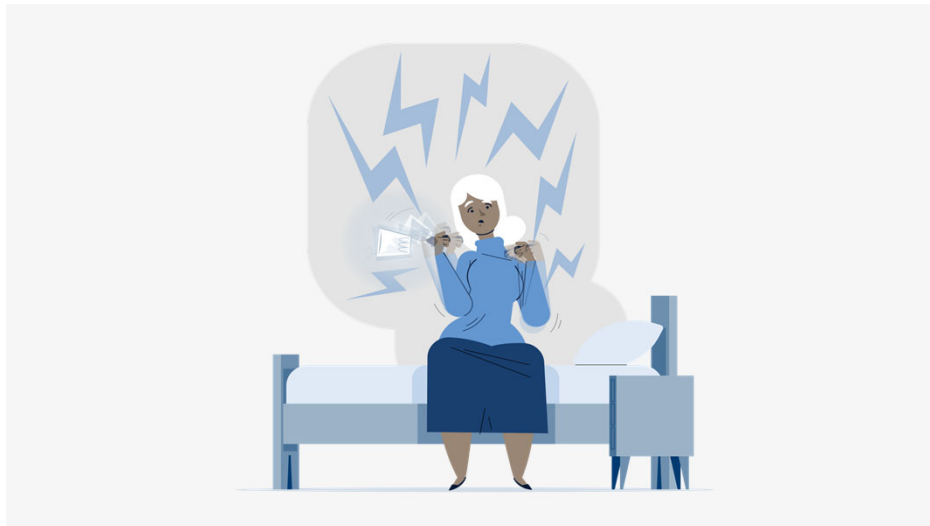
UNCONTROLLED BODILY FLUIDS

AFTER THE SEIZURE (POSTICTAL)



Generalized tonic-clonic seizures may be confused with fainting.¹

MYOCLONIC SEIZURE



← SEIZURE TYPES NEXT SEIZURE →

LENGTH

UNCONTROLLABLE JERKING

CLUMSINESS

WAKING UP/FALLING ASLEEP

AFTER THE SEIZURE (POSTICTAL)



Myoclonic seizures can often be confused with tics, tremors, or clumsiness.¹

SEE A SEIZURE

©2025 Jazz Pharmaceuticals plc or its subsidiaries. All rights reserved. US-NEU-2500025

WHEN YOU SEE A SEIZURE, LOG IT

Looking out for seizures means looking out for your residents.

S



START DATE AND TIME

T



TOTAL LENGTH

O



OBSERVED SYMPTOMS

R



RELATED EVENTS

M



MOMENTS BEFORE AND AFTER

SAM'S STORY

Things to bring to every appointment:



Seizure logs



Face sheet



Medication records



Lab results

Based on a hypothetical resident in long-term care.

SEE A SEIZURE, HELP MAKE A DIFFERENCE



THANK YOU



Scan the QR code or visit
SeeASeizure.com to rewatch
the seizure videos we saw today.

SEE A SEIZURE

©2025 Jazz Pharmaceuticals plc or its subsidiaries. All rights reserved. US-NEU-2500025