

# Nonwaiver Programs for People with IDD

The Arc of Illinois 76<sup>th</sup> Annual Convention

April 30, 2026

Presented by Kathy Carmody and Rebecca Clark



**THE INSTITUTE**  
ON PUBLIC POLICY FOR PEOPLE WITH DISABILITIES

EXPERIENCE. INTEGRITY. COLLABORATION.

# Agenda

---

Welcome and Introductions

---

Who is the Institute on Public Policy for People with Disabilities?

---

What is the System Redesign Coalition?

---

IDD System Overview: a waiver-driven system

---

Behavioral Health Clinics (BHCs)

---

Comprehensive Transition and Post-Secondary Programs (CTPs)

# The Role of The Institute in Illinois

---

The Institute on Public Policy for People with Disabilities enables human service organizations to **improve the lives** of adults living with intellectual & developmental disabilities and **strengthen their networks** of support.

60+ member organization for organizations that serve adults with IDD in Illinois

- Advocacy
- Innovation
- Knowledge Sharing



# Systems Redesign Coalition Members

Funded by the Coleman Family Foundation

**The Illinois Association  
of Rehabilitation Facilities**

**The Arc of Illinois**

**Josh  
Evans**

**Samantha  
Alloway**

**The University of Illinois  
Chicago: Institute on  
Disability and Human  
Development**

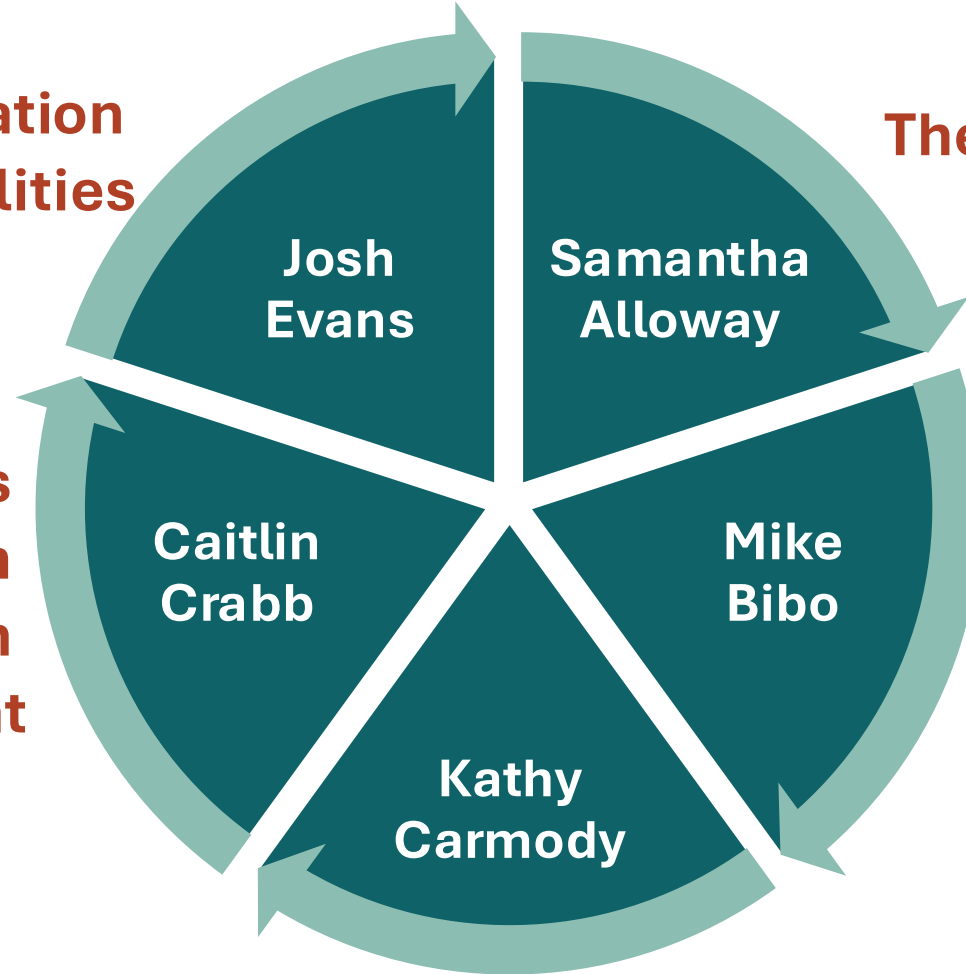
**Caitlin  
Crabb**

**The Center for  
Developmental  
Disabilities Advocacy  
and Community  
Supports**

**Mike  
Bibo**

**Kathy  
Carmody**

**The Institute on Public Policy for  
People with Disabilities**



# The SYSTEMS REDESIGN COALITION

## Our Vision for a **Person-Centered** IDD System



1

### **Accessible and Navigable**

Easy access and navigation for all regardless of location, resources, or needs.

2

### **Flexible and Sustainable**

Services that grow and change with the person receiving them, offering individualized options.

3

### **Enhanced Quality of Life**

Improving well-being, community inclusion, and independence for individuals with IDD.

4

### **Continuous Improvement**

A system that evolves by adopting and adapting best practices from other states.



# Blueprint for System Redesign



**Person & Family Voice  
→ Policy & Practice**



**Informed Choice &  
Navigation**



**Integrated Data  
Infrastructure**



**Service & Capacity  
Expansion**



**Regulatory Alignment  
& Oversight**



**Crisis & Clinical  
Capacity**



# Three Objectives for Institute Efforts

- 1. Behavioral Health Clinic Awareness + Expansion:** Address widely acknowledged unmet needs for the IDD population
- 2. CTP Incubator:** Expand opportunities for post-transition age young adults with IDD
- 3. Dignity In Pay Alignment:** Shape emerging state policy

# Current Landscape in Illinois: From IDEA (youth) to Waiver (adult)

---

## Children's System

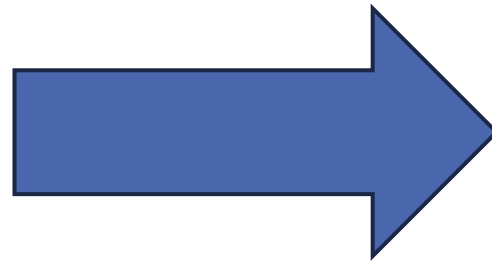
Age 3-22: Education System

IEP-Driven

**Entitlement** per IDEA

(ISBE)

Services guaranteed



## Adult System

Post K12 School

**Eligibility-based via the HCBS waiver**

(DHS/DDD)

State services based on capacity and  
funding



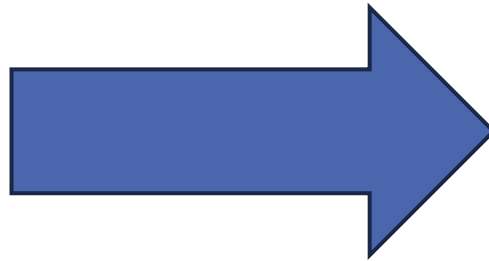
# Home and Community Based Waiver Services: Capacity

---

## Children's System



- Estimated 4,000 people leave the K12 system annually who would qualify for service



## Adult System



- CDS Census: 13,175 (6/30/24)
- PUNS selection: 6,949 adults eligible and “seeking services” (3/2/26)

Bottom Line:

**Current HCBS Waiver System capacity does not meet the demand or need.**

# Non-waiver services can fill some of the gap

---

**BHCs**

**BEHAVIORAL  
HEALTH CLINICS**

**CTPs**

**COMPREHENSIVE  
TRANSITION AND  
POST-  
SECONDARY  
PROGRAMS**

**If a person meets the criteria, they can access these programs without engaging in waiver service processes.**

# Behavioral Health Clinics

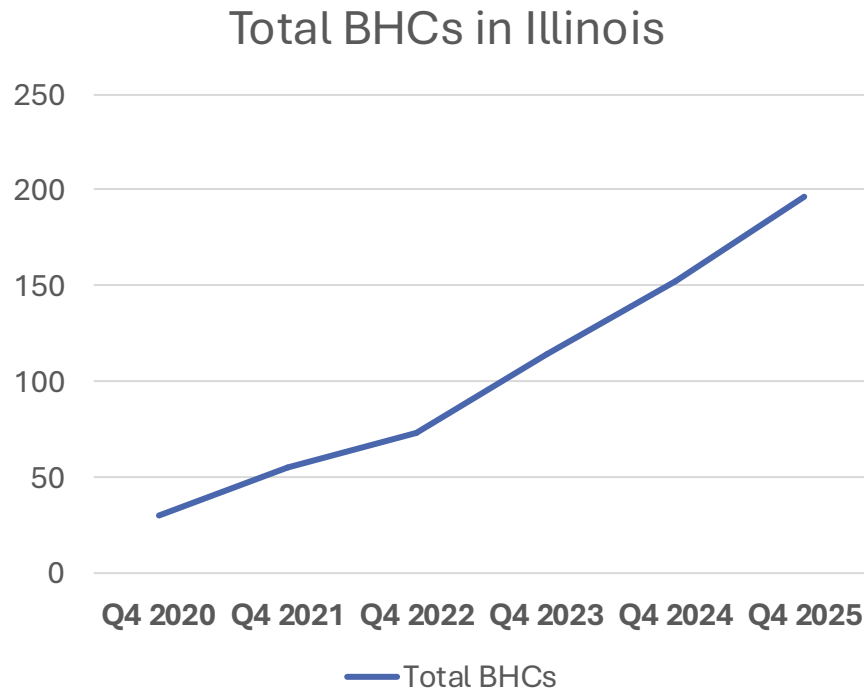
---

- Funded through HFS
  - Supported by Medicaid Technical Assistance Center: Goal to increase access to reimbursable services in Illinois
  - **Requires MH diagnosis**
- BHCs can be reimbursed for the following community services:

- Integrated Assessment & Treatment Planning (IATP)
- Developmental Screening
- Developmental Testing
- MH Risk Assessment
- Prenatal Care At-Risk Assessment

- Crisis Intervention
- Therapy/Counseling
- Community Support
- Medication Administration
- Medication Monitoring
- Medication Training
- Case Management

# Behavioral Health Clinics



## IDD Providers with BHCs

- Currently 15 IDD Providers
- In 2026 **30+** IDD providers attended trainings on how to add this service line.

# COMPREHENSIVE TRANSITION AND POST-SECONDARY PROGRAMS (aka Certified Transition Programs)

---

*DOE Designated* Certified Transition and Postsecondary Program

- College program for students with **Intellectual and Developmental Disabilities**
- Multi-year program including a combination of **credit and continuing education courses**
  - Must be in **inclusive courses** for at least **50% of their time in the program**
- Academic, life-skills, and employment focused courses based on an **individualized plan**
- Fully engaged in campus life; following **traditional campus schedule**
- Results in a certificate related to **competitive integrated employment**

# Things to Know About CTPs

---

- Focused on building skills in a college setting with a goal of employment
- Each CTP has its own design
- Students earn a certificate (not a degree)
- There is support:
  - Think College ([thinkcollege.com](http://thinkcollege.com))
  - National/Regional/State Networks
  - **Illinois IPSE**: organizing IL college programs for people with IDD

# Why is the CTP designation important?

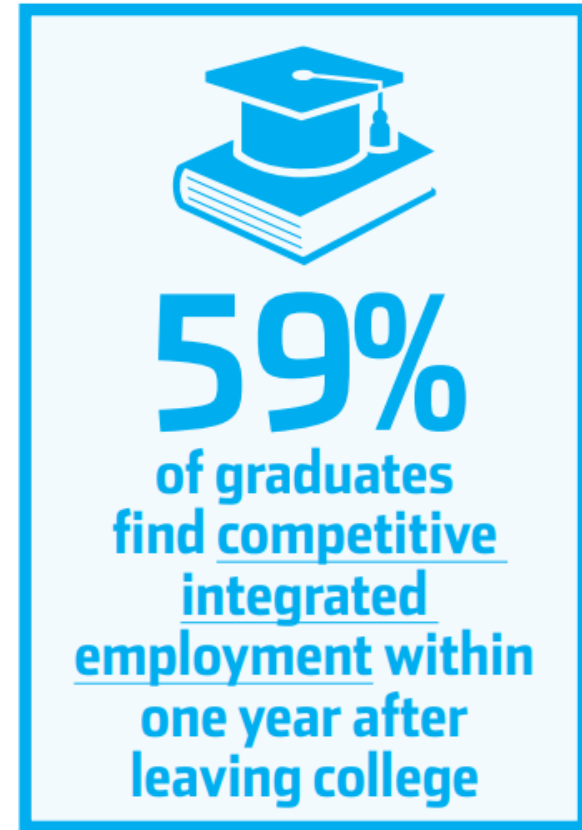
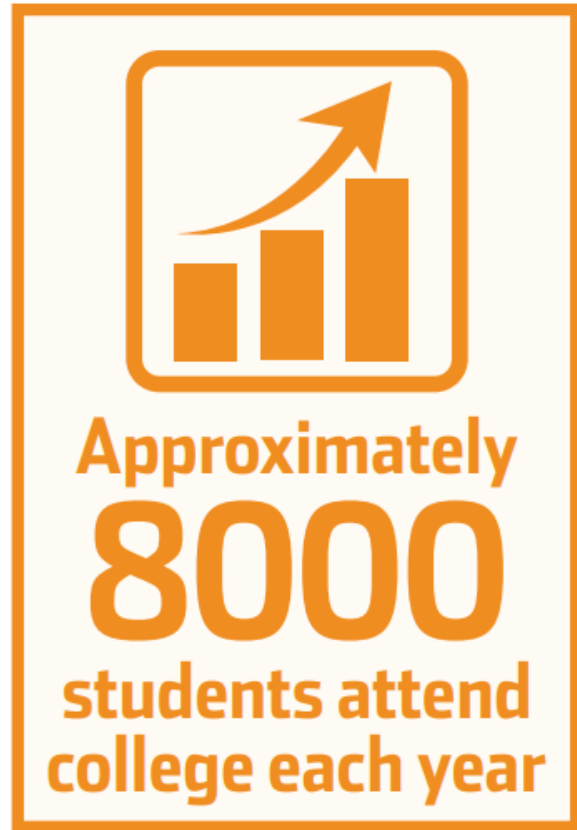
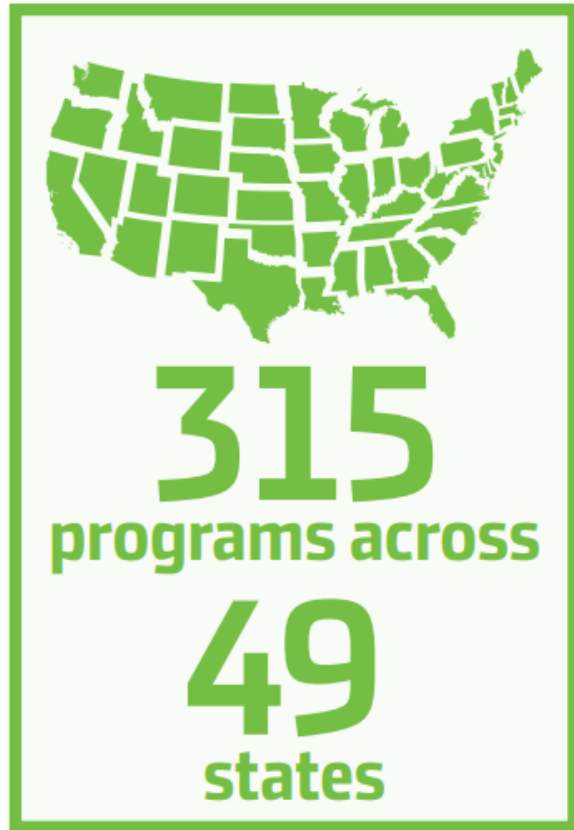
---

While there are other college programs for people with disabilities, being a CTP is important because

1. The DOE approval makes them **FAFSA eligible**.
2. The DOE approval makes the eligible for **DRS/VR funding**.
3. CTPs have a **quality** orientation, both for program design and ongoing via accreditation.

# The outcomes tell the story

---



# Questions?

---

Information coming soon on [instituteonline.org](https://instituteonline.org) about CTPs and BHCs.

